



## The knotweed programme so far

Dick Shaw  
CABI



## What/who is CABI?

- Formerly the Commonwealth Agriculture Bureaux International, established in 1913.
- UN-Treaty level, **not-for profit** intergovernmental organisation owned by its 46 member countries
- CABI includes the former International Institute of Biological Control (**IIBC**) and 3 other institutes





# Japanese knotweed Phase 1



ENVIRONMENT  
AGENCY



# Project sponsors









# Natural habitat



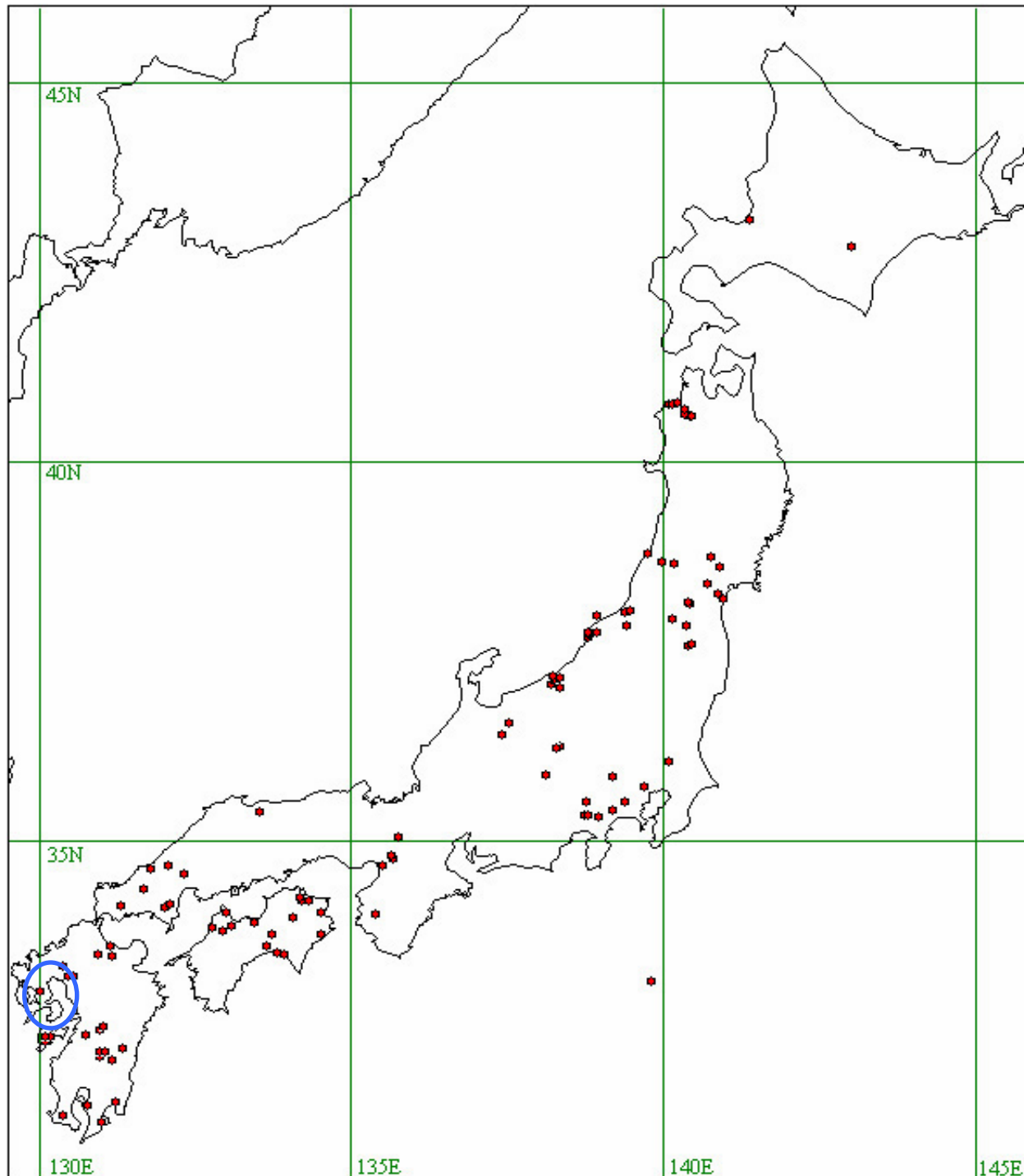




28 MAY 2003



Distribution of sites in Japan from which Japanese Knotweed specimens have been analysed



Closest match from Nagasaki





## The Japanese team from Kyushu

- Professor M. Takagi
- Daisuke Kurose
- Dr N. Furuya
- Dr N. Takahashi



APPOINT  
TO MY LEADS

25

**NOTICE**  
AUTHORIZED  
PERSONS ONLY

Plant Pathology work area  
AUTHORIZED ACCESS ONLY  
Disposable body suits and foot  
protectors **MUST** be worn.  
**STRICTLY NO EXCEPTIONS**

Plant  
Pathology





# Insects

*Lixus impressiventris*







*Machiatella itadori*



*Ostrinia latipennis* &  
*ovalipennis*





*Amatastegia polygoni*

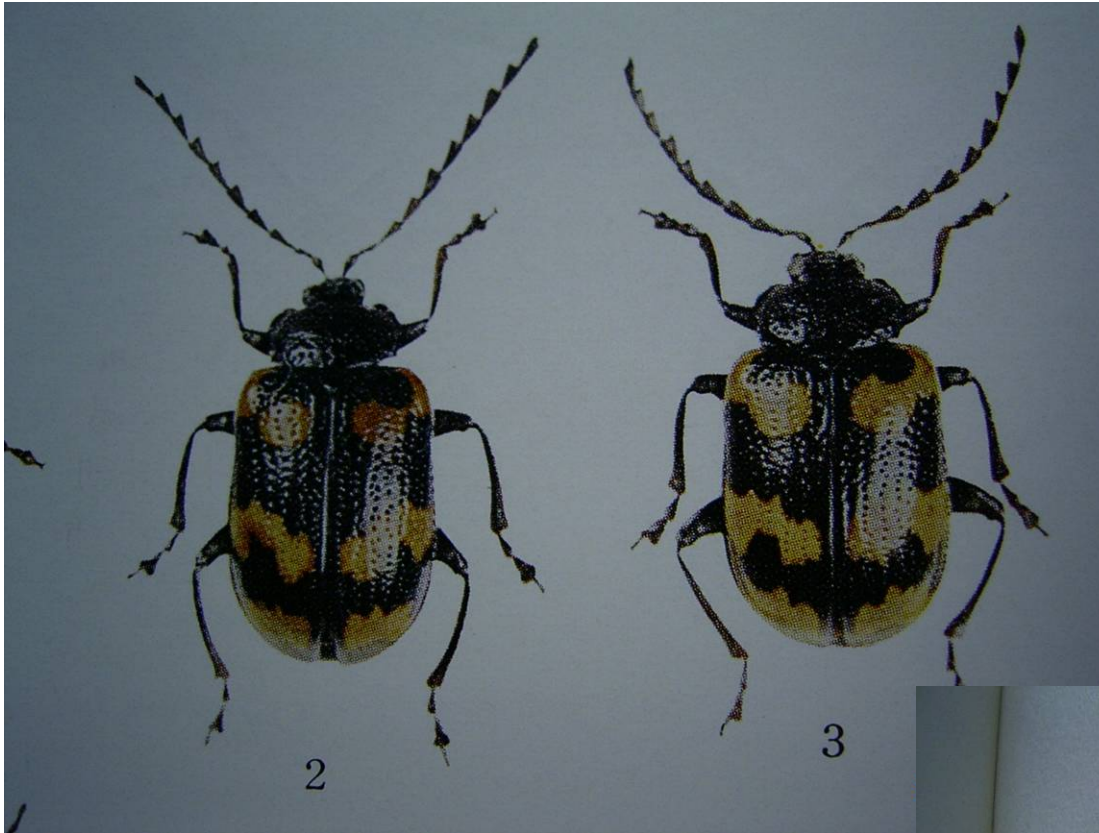
*Gallerucida bifasciata/nigromaculata*



21 MAY 2003







ドウ。分布：本州・四国・九州。

2. オオイタドリハムシ

*Gallerucida bifasciata* Motschulsky

体長 9 mm 内外。黒色，上翅の斑紋は橙黄色。触角は第 4 節より鋸状。頭は後方小点刻を具え，前頭隆起は円い。前胸背は網状微細印刻を具え粗大点刻を不規則に散布し，背面両側でやや密，間室は小点刻を疎に具える。上翅は粗大点刻列を具え，間室は浅い小点刻を有する。食草：オオイタドリ。分布：北海道。

3. イタドリハムシ

*Gallerucida nigromaculata* Baly

体長 7.5 mm 内外。前種にきわめてよく似ているが前胸背は光沢があり微細印刻は殆んど認めにくく，前頭隆起は内側で細くて外側で拡がり，上翅点刻列はより細く，表面はほぼ平たい。本種の斑紋はかなり変化があり，時に後方の 2 紋は相連絡して間に黒紋を分離する。食草：イタドリ・オオイタドリ・スイバ・ギシギシ。分布：本州・四国・九州；朝鮮・満州・支那・東シベリア・台湾。

4. ムツキボシハムシ

*Gallerucida lewisii* Jacoby

体長 6 mm 内外。黒色で背面は微かに銅光沢をおび

鈍い。  
中央直  
を一様  
え翅端  
・コ  
道・ス

体  
は光  
央・  
疎布  
を散  
状を  
ミツ  
州・

体  
触角

*Aphalara itadori*





*Endoclyta excrescens*



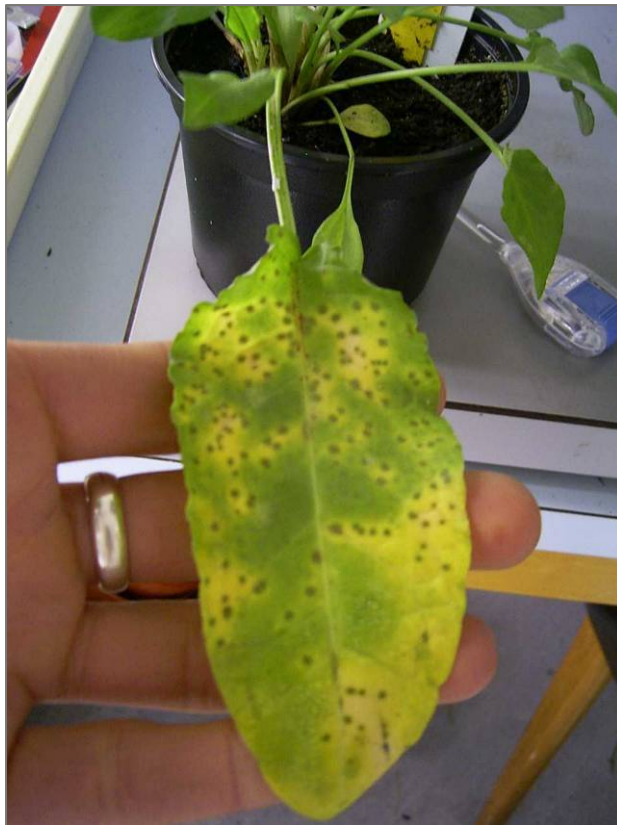


# FUNGI



*Puccinia rust*

## Host range tests *Puccinia* sp.



*Rumex longifolius*

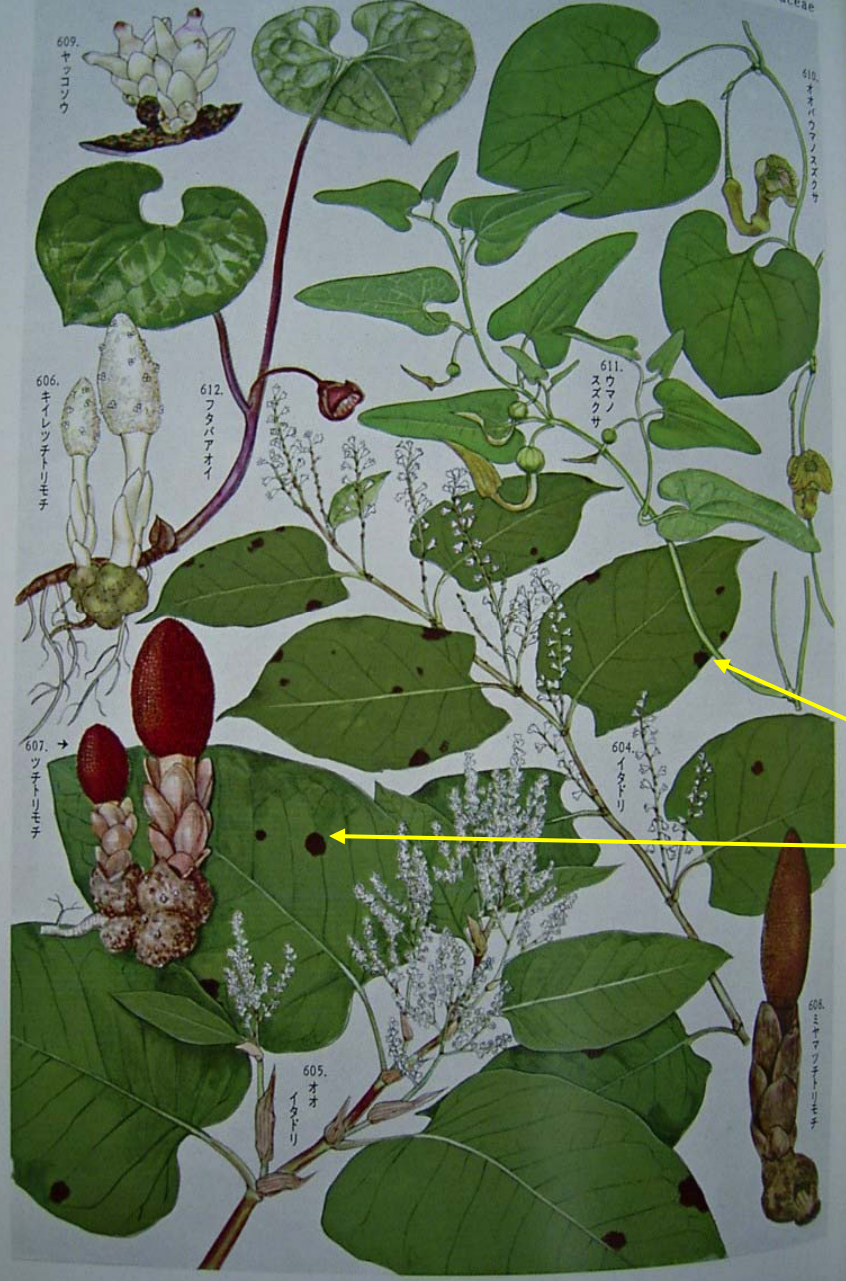


*Fallopia baldschuanica*



*Mycosphaerella* sp.

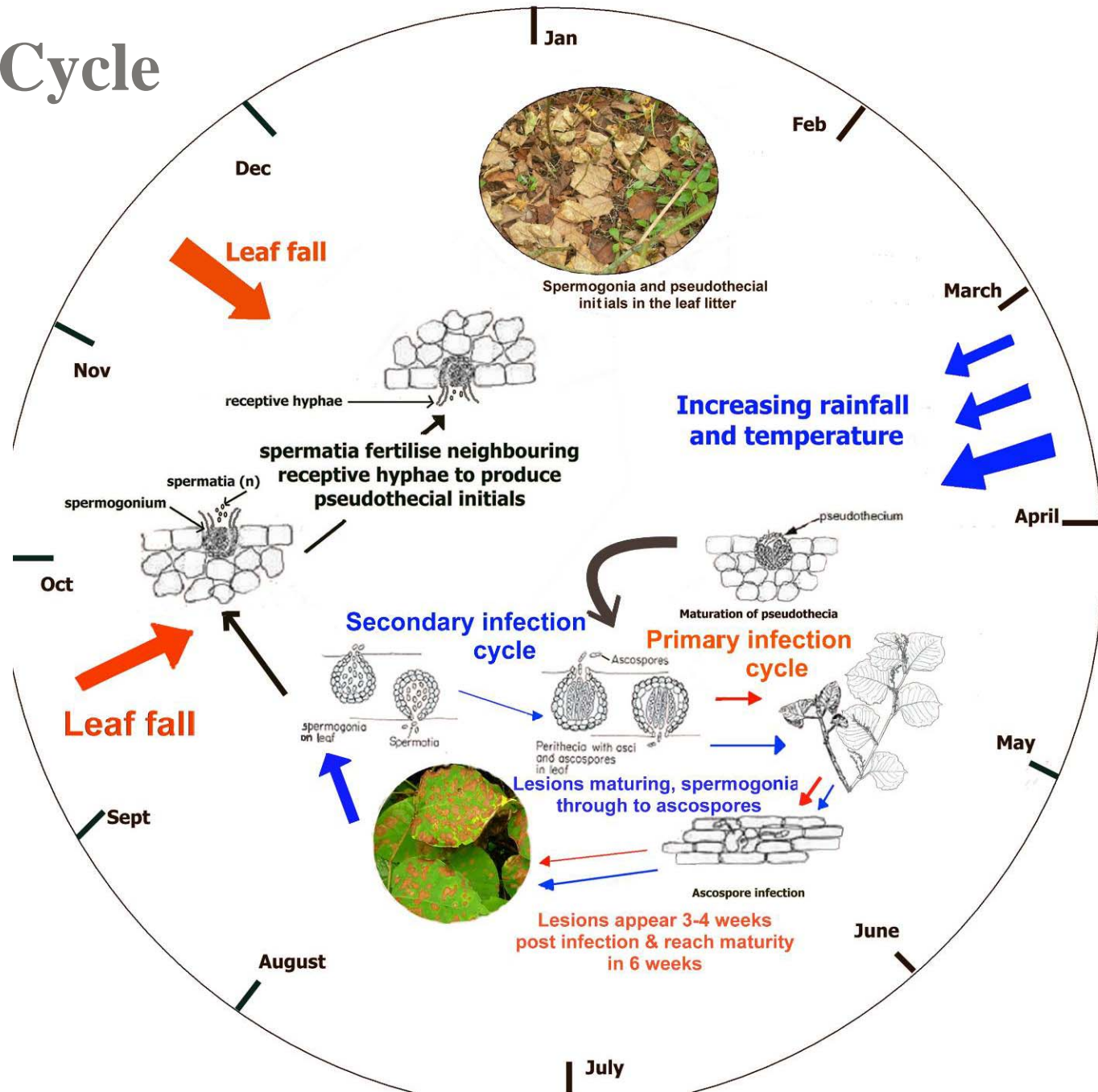




So common that  
it is included in  
the Flora of  
Japan

26 MAY 2003

# Life Cycle





## Alternative Solution?





## Thank you

Richard Reardon - USDA Forest Service

Fritzi Grevstad

John Bailey

UK project sponsors (as listed earlier)

The Japanese team – Kyushu University

Djami Djeddour, Rob Tanner, Harry Evans, Marion Seier, Carol Ellison & Lynn Hill

**[r.shaw@cabi.org](mailto:r.shaw@cabi.org)**

**[www.cabi-bioscience.org/html/japanese\\_knotweed\\_alliance](http://www.cabi-bioscience.org/html/japanese_knotweed_alliance)**